

Tulip Slip

Copyright Tricia Wilson Nguyen for Thistle Threads, 2010

Stitched by Kris Andrews

Materials

Symbol	Au Ver a Soie Soie d'Alger	Color
●	4136	Dark Brown
X	3425	Dark Teal
◇	5023	Medium Teal
/	1842	Light Teal
■	4624	Red
◇	2914	Light Pink
.	4232	Buttermilk
*	2116	Dark Green
o	2125	Medium Green
+	2234	Gold

#26 Tapestry needle

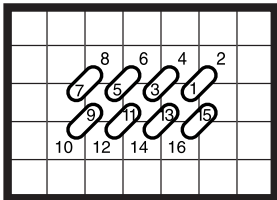
6" x 6" 34 ct. Legacy Linen in Oaten Scone



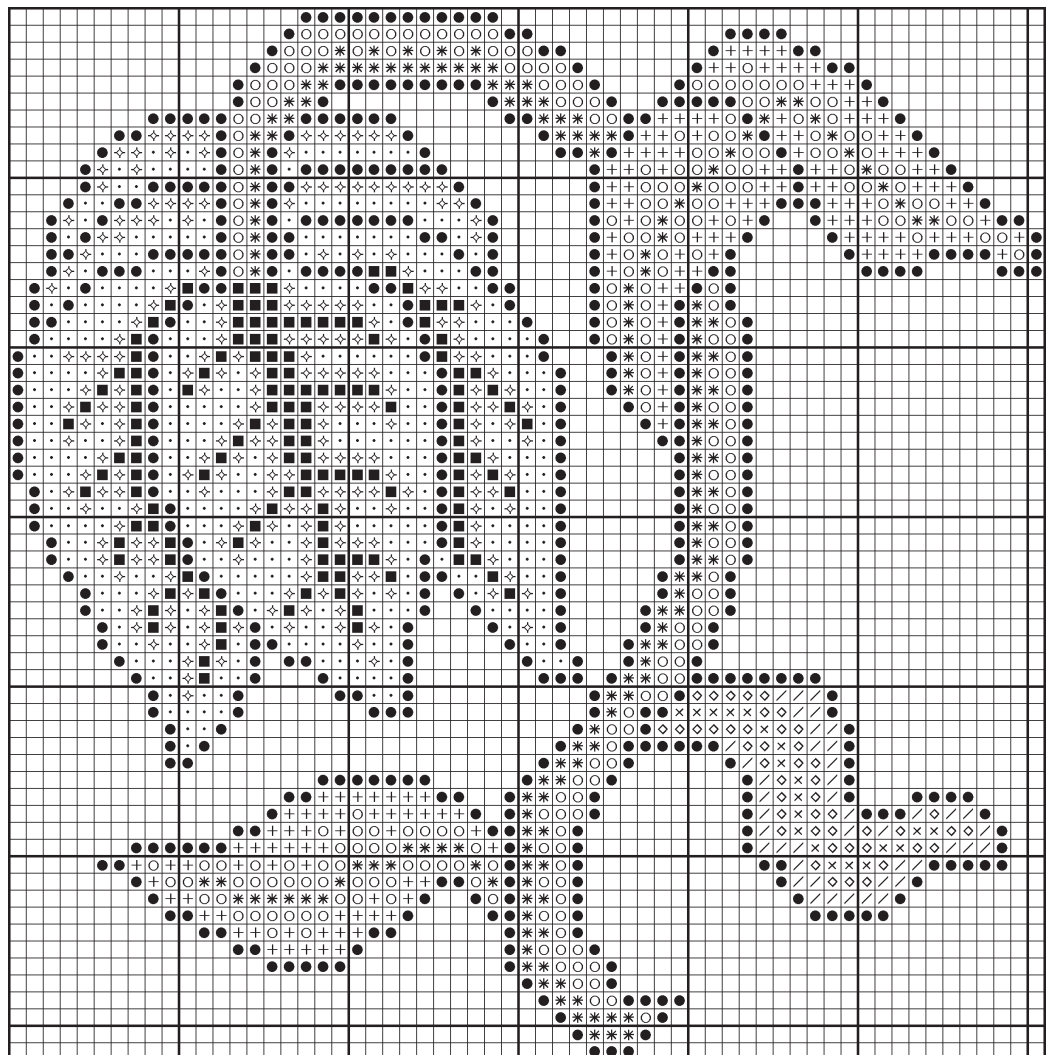
Finished Embroidery

INSTRUCTIONS

1. Work the design in tent stitch with one strand of floss over one linen thread.



Tent Stitch



Tulip Slip Graph: Each square on the graph is one linen thread