

Outline Carnation

- Outline the carnation with one strand of Elizabethan Twist 2% couched using one strand of TIRE silk #86.



Attach Gilt Rough Purl



- The satin stitched leaves are covered with sewn down pieces of Gilt Rough Purl #7 perpendicular to the satin stitch direction.
- Use one strand of #2234 silk in the smallest needle to sew them in place like a bead

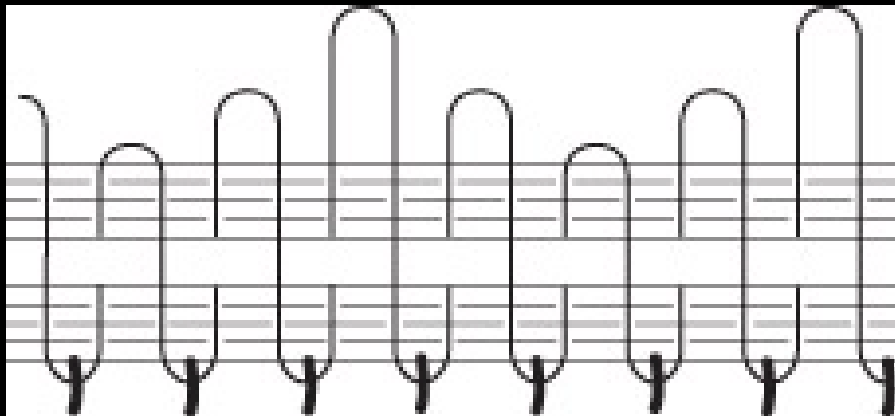
Seed Pearls



- Sew down three lines of seed pearls in the center of the rose.
- Use one strand of Cream Soie Paris and the #15 beading needle
- Thread on three pearls for the centerline and sew it down in one large satin stitch.
- Sew down two pearls on either side of the middle row.

Attach Webgimpe Lace

- Couch webgimpe lace with one strand of #2242 silk and #8 embroidery needle



Embellish Ribbon

- Couch the Elizabethan Twist 2% to the top edge using one strand of #2636 Soie Paris.
- Every 3/8" catch a spangle in the couching stitch.
 - Position the spangle so that all of them are on the same side and sticking up over the edge of the silk ribbon.
- Stitch about 60 spangles along the edge.



Prepare Bottom

- Take the 9" x 5 3/4" piece of ultrasuede and trace the piece of die cut 4-ply matt board on it. Make sure the thumb is in the correct position.
- Trim the ultrasuede with a 1/2" allowance from the traced line.

